

- NOTES:**
1. MAX TRAIN SPEED 20 M.P.H.
 2. 45 SECONDS WARNING TIME. INCLUDES 5 SECONDS FOR CROSSING CLEARANCE DISTANCE.
 3. SIGNALS 1,2 AND 3 TO HAVE BELLS.
 4. ALL DIMENSIONS ARE APPROXIMATE AND MAY VARY DUE TO ACTUAL FIELD CONDITIONS.
 5. INSTALLATION TO BE IN ACCORDANCE WITH MUTCD, STATE AND/OR RAILROAD STANDARDS.

NOT TO SCALE

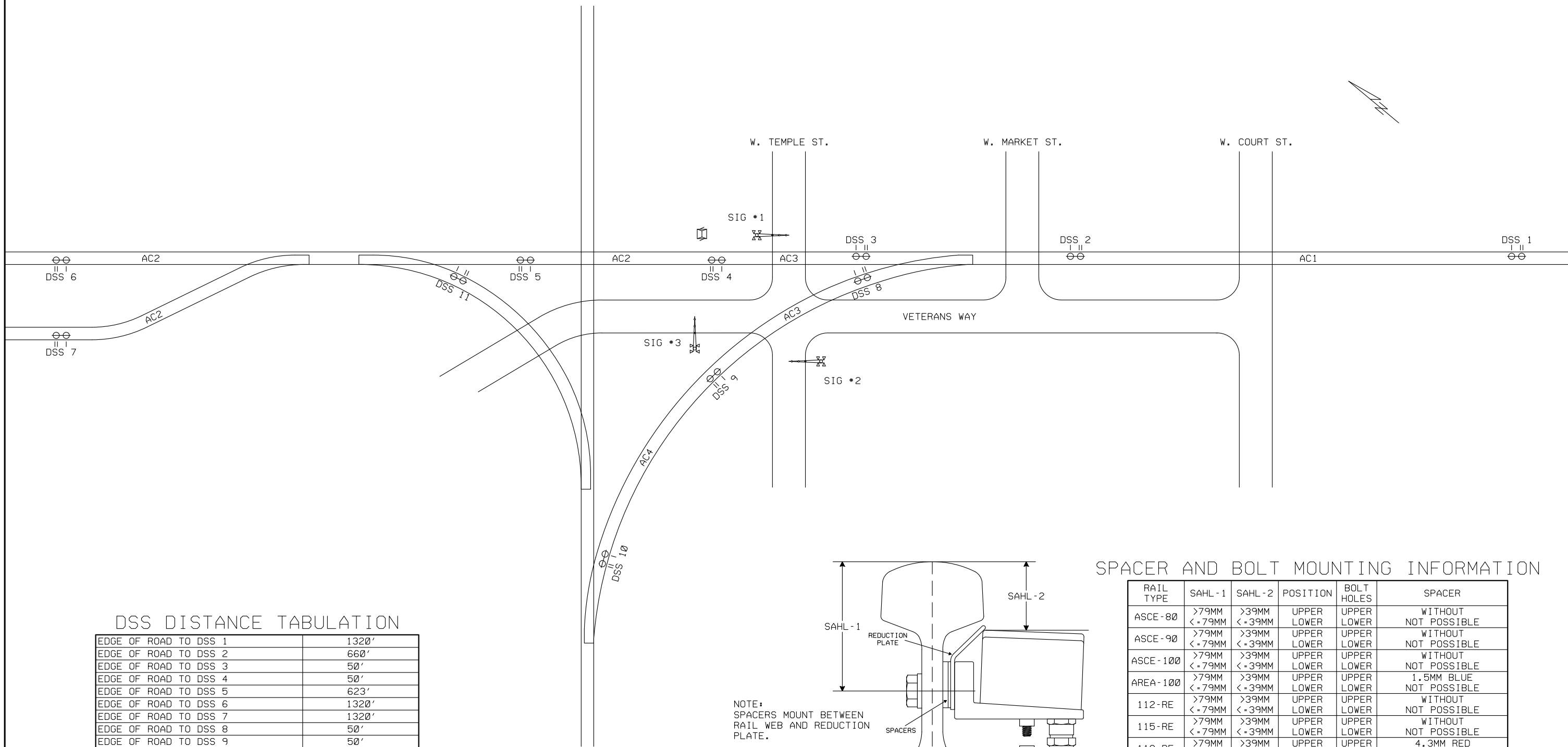
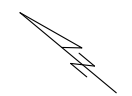
| REVISIONS | | | | | | | |
|-----------|--|--|--|--|--|--|--|
| | | | | | | | |

THE OPERATION OF THE CIRCUITS AND EQUIPMENT REPRESENTED HEREIN CANNOT BE FULLY CHECKED UNTIL ALL CIRCUITS AND DEVICES ARE CONNECTED TO FORM A COMPLETE SYSTEM, OR AN EFFECTIVE SUBSYSTEM. SUCH SYSTEM OR SUBSYSTEM MUST BE GIVEN COMPLETE CIRCUIT AND OPERATIONAL TESTS BEFORE BEING PLACED IN REGULAR OPERATION.

PINTSCH
 Safety for Rail
 Pintsch North America
 810 Skyline Drive
 Marion, Illinois 62959
 618-993-8513

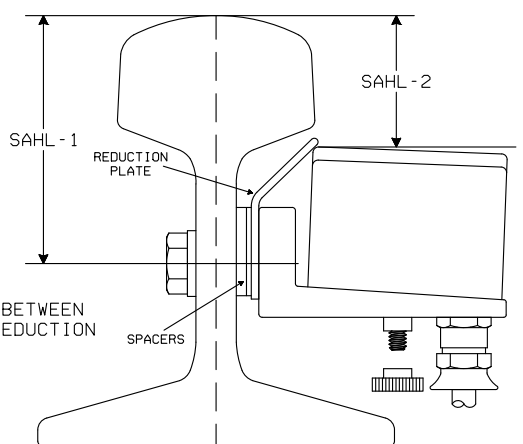
GENESEE & WYOMING

| | | |
|------------------|-------------------------------|--------------|
| DRAWN: J.G.C. | LAYOUT | DRAWING NO. |
| DESIGNED: J.A.W. | WEST TEMPLE STREET | T-2363 |
| CHECKED: J.A.W. | WASHINGTON COURT HOUSE, OHIO | SHEET 1 OF 4 |
| DATE: 02-24-23 | DOT #153762C MILEPOST #233.18 | |



DSS DISTANCE TABULATION

| | |
|------------------------|-------|
| EDGE OF ROAD TO DSS 1 | 1320' |
| EDGE OF ROAD TO DSS 2 | 660' |
| EDGE OF ROAD TO DSS 3 | 50' |
| EDGE OF ROAD TO DSS 4 | 50' |
| EDGE OF ROAD TO DSS 5 | 623' |
| EDGE OF ROAD TO DSS 6 | 1320' |
| EDGE OF ROAD TO DSS 7 | 1320' |
| EDGE OF ROAD TO DSS 8 | 50' |
| EDGE OF ROAD TO DSS 9 | 50' |
| EDGE OF ROAD TO DSS 10 | 660' |
| EDGE OF ROAD TO DSS 11 | 750' |



NOTE:
SPACERS MOUNT BETWEEN
RAIL WEB AND REDUCTION
PLATE.

- DRAWING DIMENSIONS SHOWN ARE FOR EXAMPLE PURPOSES ONLY. SEE PINTSCH NORTH AMERICA INSTALLATION MANUAL FOR EXACT DIMENSIONS.
- ONLY AUTHORIZED CEMBRE OR PINTSCH NORTH AMERICA DRILLING APPARATUS SHOULD BE USED.
- PRECISION VERTICAL AND HORIZONTAL DRILLING TEMPLATES ARE REQUIRED TO ENSURE PROPER MOUNTING AND OPERATION.

SPACER AND BOLT MOUNTING INFORMATION

| RAIL TYPE | SAHL - 1 | SAHL - 2 | POSITION | BOLT HOLES | SPACER |
|------------|-----------------|-----------------|----------------|----------------|------------------------------------|
| ASCE - 80 | >79MM <-79MM | >39MM <-39MM | UPPER LOWER | UPPER LOWER | WITHOUT NOT POSSIBLE |
| ASCE - 90 | >79MM <-79MM | >39MM <-39MM | UPPER LOWER | UPPER LOWER | WITHOUT NOT POSSIBLE |
| ASCE - 100 | >79MM <-79MM | >39MM <-39MM | UPPER LOWER | UPPER LOWER | WITHOUT NOT POSSIBLE |
| AREA - 100 | >79MM <-79MM | >39MM <-39MM | UPPER LOWER | UPPER LOWER | 1.5MM BLUE NOT POSSIBLE |
| 112-RE | >79MM <-79MM | >39MM <-39MM | UPPER LOWER | UPPER LOWER | WITHOUT NOT POSSIBLE |
| 115-RE | >79MM <-79MM | >39MM <-39MM | UPPER LOWER | UPPER LOWER | WITHOUT NOT POSSIBLE |
| 119-RE | >79MM <-79MM | >39MM <-39MM | UPPER LOWER | UPPER LOWER | 4.3MM RED NOT POSSIBLE |
| CB - 122 | >79MM <-79MM | >39MM <-39MM | UPPER LOWER | UPPER LOWER | WITHOUT WITHOUT |
| 132-RE | >79MM <-79MM | >39MM <-39MM | UPPER LOWER | UPPER LOWER | 3.6MM GREEN WITHOUT |
| 136-RE | >79MM <-79MM | >39MM <-39MM | UPPER LOWER | UPPER LOWER | 1.3MM GRAY-4.3MM RED 1.5MM BLUE |
| 140-RE | >79MM <-79MM | >39MM <-39MM | UPPER LOWER | UPPER LOWER | 1.0MM RED-4.3MM RED 2.0MM BROWN |
| 141-RE | >79MM <-79MM | >39MM <-39MM | UPPER LOWER | UPPER LOWER | 1.0MM RED-4.3MM RED 4.3MM WHITE |

NOT TO SCALE

| REVISIONS | | | | | |
|-----------|--|--|--|--|--|
| | | | | | |
| | | | | | |
| | | | | | |
| | | | | | |
| | | | | | |

THE OPERATION OF THE CIRCUITS AND EQUIPMENT REPRESENTED HEREIN CANNOT BE FULLY CHECKED UNTIL ALL CIRCUITS AND DEVICES ARE CONNECTED TO FORM A COMPLETE SYSTEM, OR AN EFFECTIVE SUBSYSTEM. SUCH SYSTEM OR SUBSYSTEM MUST BE GIVEN COMPLETE CIRCUIT AND OPERATIONAL TESTS BEFORE BEING PLACED IN REGULAR OPERATION.

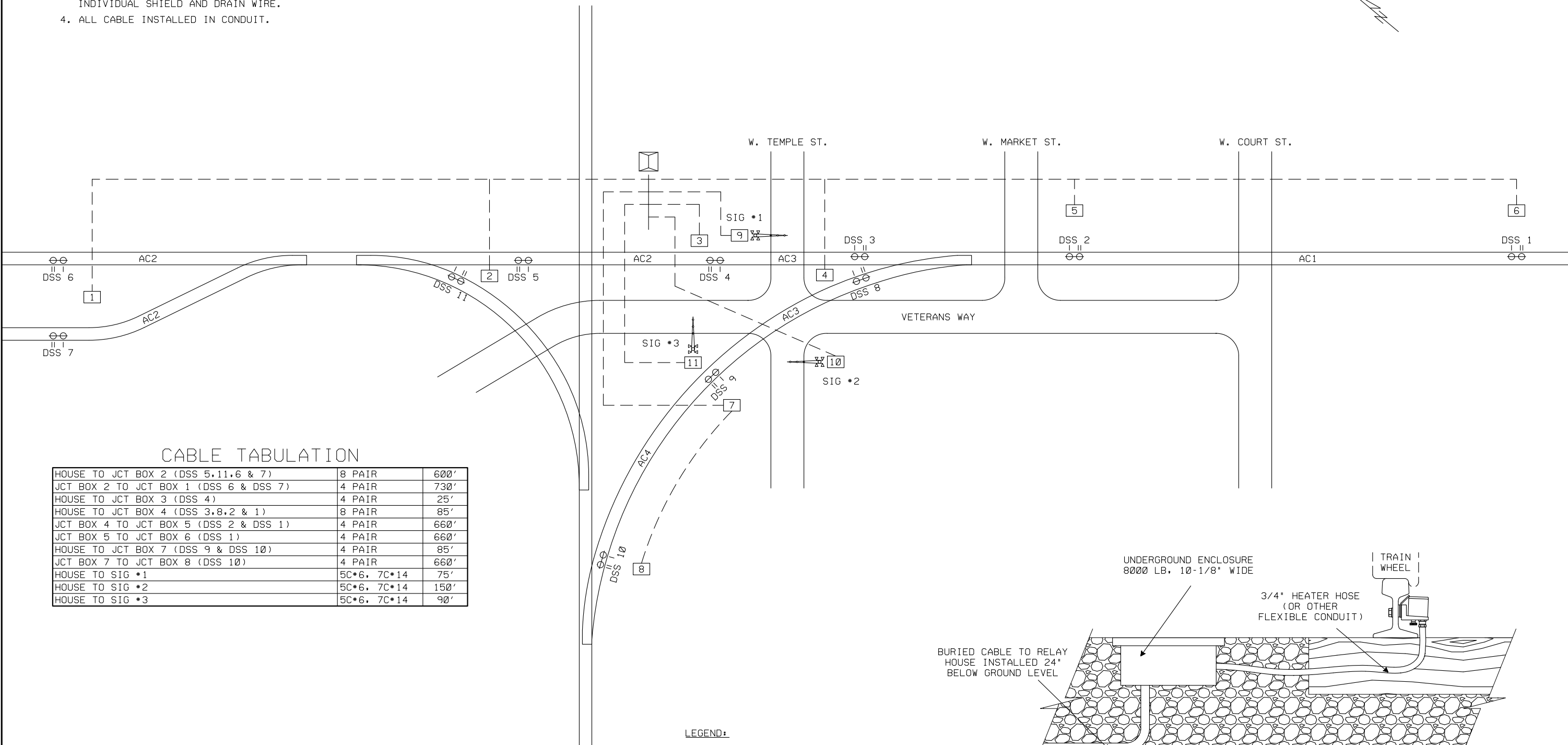
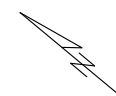
PINTSCH
Safety for Rail
Pintsch North America
810 Skyline Drive
Marion, Illinois 62959
618-993-8513

GENESEE & WYOMING

| | | |
|------------------|-------------------------------|--------------|
| DRAWN: J.G.C. | PROFILE | DRAWING NO. |
| DESIGNED: J.A.W. | WEST TEMPLE STREET | T-2363 |
| CHECKED: J.A.W. | WASHINGTON COURT HOUSE, OHIO | SHEET 2 OF 4 |
| DATE: 02-24-23 | DOT #153762C MILEPOST #233.18 | |

NOTES:

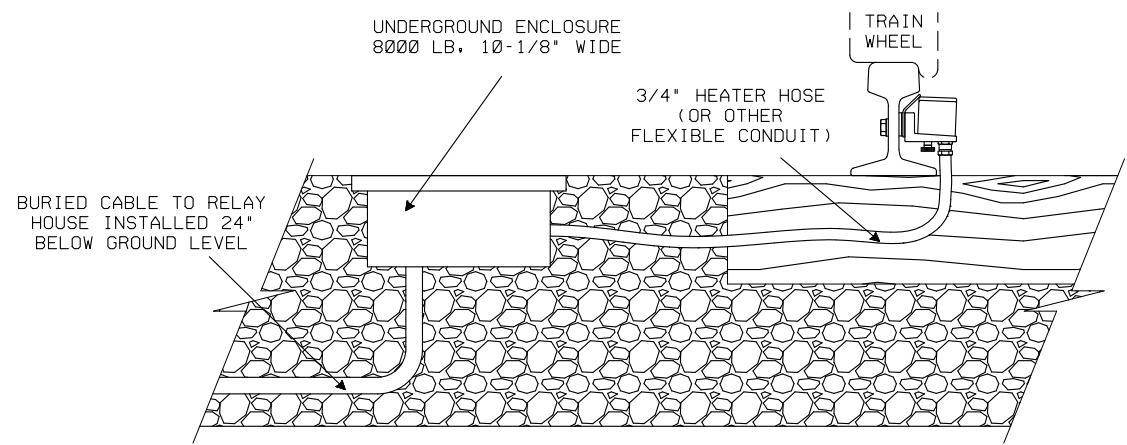
1. OVERALL CABLE/CONDUIT DEPTH 24 INCHES OR GREATER.
2. CABLE DEPTH BETWEEN TIES SHOULD BE 14 INCHES IN DEPTH. THIS WILL PROVIDE 4 INCHES OF PROTECTION UNDER TIES.
3. RECOMMENDED CABLE IS OKONITE TYPE SP-OS, 18-GAUGE. EACH SENSOR REQUIRES MINIMUM TWO PAIR, WITH TWIST, INDIVIDUAL SHIELD AND DRAIN WIRE.
4. ALL CABLE INSTALLED IN CONDUIT.



CABLE TABULATION

| | | |
|--|-------------|------|
| HOUSE TO JCT BOX 2 (DSS 5, 11, 6 & 7) | 8 PAIR | 600' |
| JCT BOX 2 TO JCT BOX 1 (DSS 6 & DSS 7) | 4 PAIR | 730' |
| HOUSE TO JCT BOX 3 (DSS 4) | 4 PAIR | 25' |
| HOUSE TO JCT BOX 4 (DSS 3, 8, 2 & 1) | 8 PAIR | 85' |
| JCT BOX 4 TO JCT BOX 5 (DSS 2 & DSS 1) | 4 PAIR | 660' |
| JCT BOX 5 TO JCT BOX 6 (DSS 1) | 4 PAIR | 660' |
| HOUSE TO JCT BOX 7 (DSS 9 & DSS 10) | 4 PAIR | 85' |
| JCT BOX 7 TO JCT BOX 8 (DSS 10) | 4 PAIR | 660' |
| HOUSE TO SIG *1 | 5C*6, 7C*14 | 75' |
| HOUSE TO SIG *2 | 5C*6, 7C*14 | 150' |
| HOUSE TO SIG *3 | 5C*6, 7C*14 | 90' |

LEGEND:
 - JUNCTION BOX



NOT TO SCALE

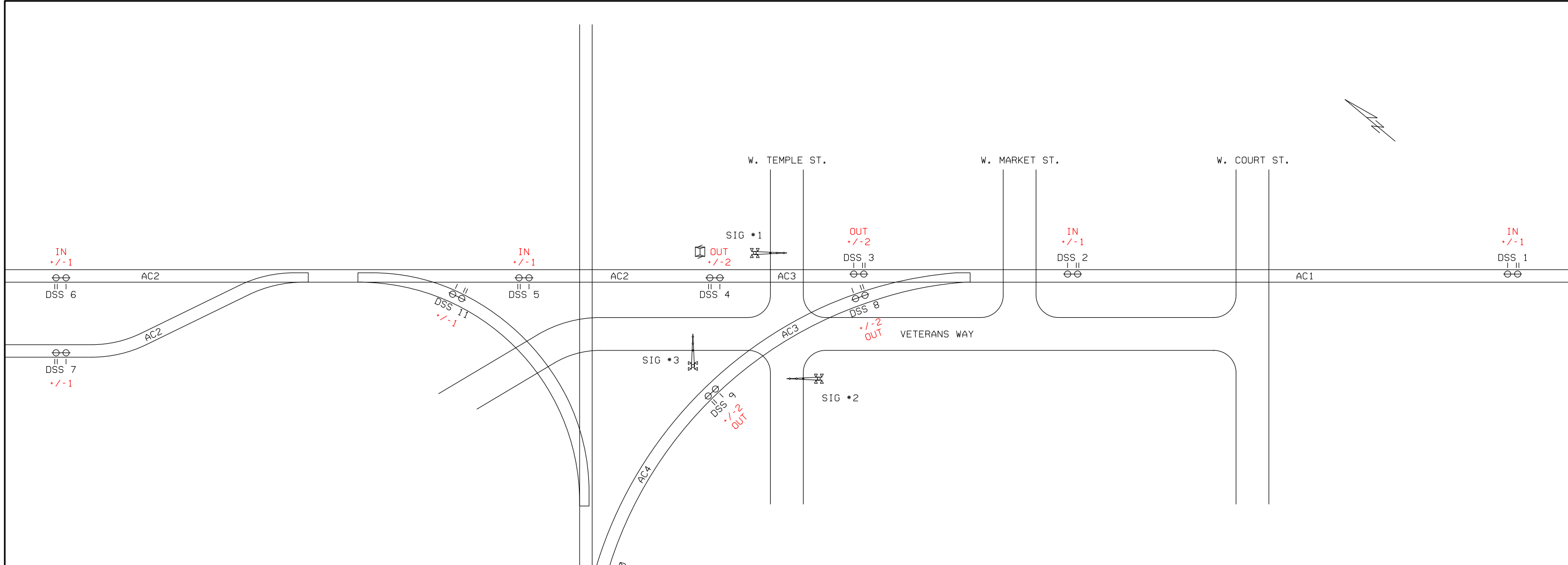
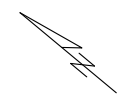
REVISIONS

THE OPERATION OF THE CIRCUITS AND EQUIPMENT REPRESENTED HEREIN CANNOT BE FULLY CHECKED UNTIL ALL CIRCUITS AND DEVICES ARE CONNECTED TO FORM A COMPLETE SYSTEM, OR AN EFFECTIVE SUBSYSTEM. SUCH SYSTEM OR SUBSYSTEM MUST BE GIVEN COMPLETE CIRCUIT AND OPERATIONAL TESTS BEFORE BEING PLACED IN REGULAR OPERATION.

PINTSCH
 Safety for Rail
 Pintsch North America
 810 Skyline Drive
 Marion, Illinois 62959
 618-993-8513

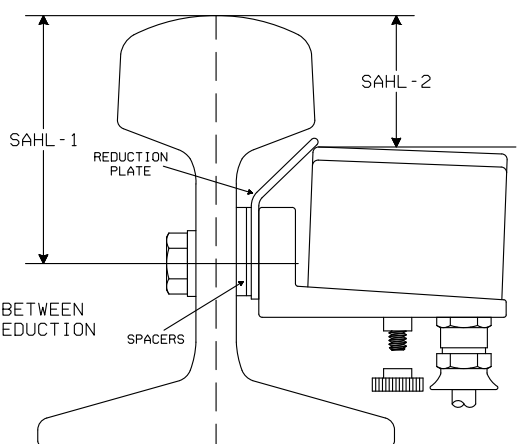
GENESEE & WYOMING

| | | |
|------------------|-------------------------------|--------------|
| DRAWN: J.G.C. | CABLE | DRAWING NO. |
| DESIGNED: J.A.W. | WEST TEMPLE STREET | T-2363 |
| CHECKED: J.A.W. | WASHINGTON COURT HOUSE, OHIO | SHEET 3 OF 4 |
| DATE: 02-24-23 | DOT *153762C MILEPOST *233.18 | |



DSS DISTANCE TABULATION

| | |
|------------------------|-------|
| EDGE OF ROAD TO DSS 1 | 1320' |
| EDGE OF ROAD TO DSS 2 | 660' |
| EDGE OF ROAD TO DSS 3 | 50' |
| EDGE OF ROAD TO DSS 4 | 50' |
| EDGE OF ROAD TO DSS 5 | 623' |
| EDGE OF ROAD TO DSS 6 | 1320' |
| EDGE OF ROAD TO DSS 7 | 1320' |
| EDGE OF ROAD TO DSS 8 | 50' |
| EDGE OF ROAD TO DSS 9 | 50' |
| EDGE OF ROAD TO DSS 10 | 660' |
| EDGE OF ROAD TO DSS 11 | 750' |



NOTE:
SPACERS MOUNT BETWEEN
RAIL WEB AND REDUCTION
PLATE.

- DRAWING DIMENSIONS SHOWN ARE FOR EXAMPLE PURPOSES ONLY. SEE PINTSCH NORTH AMERICA INSTALLATION MANUAL FOR EXACT DIMENSIONS.
- ONLY AUTHORIZED CEMBRE OR PINTSCH NORTH AMERICA DRILLING APPARATUS SHOULD BE USED.
- PRECISION VERTICAL AND HORIZONTAL DRILLING TEMPLATES ARE REQUIRED TO ENSURE PROPER MOUNTING AND OPERATION.

SPACER AND BOLT MOUNTING INFORMATION

| RAIL TYPE | SAHL - 1 | SAHL - 2 | POSITION | BOLT HOLES | SPACER |
|-----------|-----------------|-----------------|----------------|----------------|------------------------------------|
| ASCE-80 | >79MM <-79MM | >39MM <-39MM | UPPER LOWER | UPPER LOWER | WITHOUT NOT POSSIBLE |
| ASCE-90 | >79MM <-79MM | >39MM <-39MM | UPPER LOWER | UPPER LOWER | WITHOUT NOT POSSIBLE |
| ASCE-100 | >79MM <-79MM | >39MM <-39MM | UPPER LOWER | UPPER LOWER | WITHOUT NOT POSSIBLE |
| AREA-100 | >79MM <-79MM | >39MM <-39MM | UPPER LOWER | UPPER LOWER | 1.5MM BLUE NOT POSSIBLE |
| 112-RE | >79MM <-79MM | >39MM <-39MM | UPPER LOWER | UPPER LOWER | WITHOUT NOT POSSIBLE |
| 115-RE | >79MM <-79MM | >39MM <-39MM | UPPER LOWER | UPPER LOWER | WITHOUT NOT POSSIBLE |
| 119-RE | >79MM <-79MM | >39MM <-39MM | UPPER LOWER | UPPER LOWER | 4.3MM RED NOT POSSIBLE |
| CB-122 | >79MM <-79MM | >39MM <-39MM | UPPER LOWER | UPPER LOWER | WITHOUT WITHOUT |
| 132-RE | >79MM <-79MM | >39MM <-39MM | UPPER LOWER | UPPER LOWER | 3.6MM GREEN WITHOUT |
| 136-RE | >79MM <-79MM | >39MM <-39MM | UPPER LOWER | UPPER LOWER | 1.3MM GRAY+4.3MM RED 1.5MM BLUE |
| 140-RE | >79MM <-79MM | >39MM <-39MM | UPPER LOWER | UPPER LOWER | 1.0MM RED+4.3MM RED 2.0MM BROWN |
| 141-RE | >79MM <-79MM | >39MM <-39MM | UPPER LOWER | UPPER LOWER | 1.0MM RED+4.3MM RED 4.3MM WHITE |

NOT TO SCALE

| REVISIONS | | | | | |
|-----------|--|--|--|--|--|
| | | | | | |
| | | | | | |
| | | | | | |
| | | | | | |
| | | | | | |
| | | | | | |

THE OPERATION OF THE CIRCUITS AND EQUIPMENT REPRESENTED HEREIN CANNOT BE FULLY CHECKED UNTIL ALL CIRCUITS AND DEVICES ARE CONNECTED TO FORM A COMPLETE SYSTEM, OR AN EFFECTIVE SUBSYSTEM. SUCH SYSTEM OR SUBSYSTEM MUST BE GIVEN COMPLETE CIRCUIT AND OPERATIONAL TESTS BEFORE BEING PLACED IN REGULAR OPERATION.

PINTSCH
Safety for Rail
Pintsch North America
810 Skyline Drive
Marion, Illinois 62959
618-993-8513

GENESEE & WYOMING

| | | |
|------------------|-------------------------------|--------------------|
| DRAWN: J.G.C. | WEST TEMPLE STREET | DRAWING NO. T-2363 |
| DESIGNED: J.A.W. | WASHINGTON COURT HOUSE, OHIO | SHEET 4 OF 4 |
| CHECKED: J.A.W. | DOT #153762C MILEPOST #233.18 | |
| DATE: 02-24-23 | | |